

# Wolverine Lake 2014 Data Summary

## Wolverine Lake Snapshot

Years Monitored: 13  
 Total # of Events: 36  
 2014 Events: 3  
 Total Hours Monitored: 117.5

## Observations

### Wildlife Observed:

Bats	Beaver
Eagle	Fish
Frogs	Grebes
Insects	Loons
Muskrat	Ravens
Swans	Trout

### Water Level:

Medium to high

### Water Color:

Brownish

### Algae:

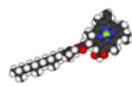
Sparse to heavy; small and some well developed algae blooms in August; along shallow lake areas.

### Aquatic Plants:

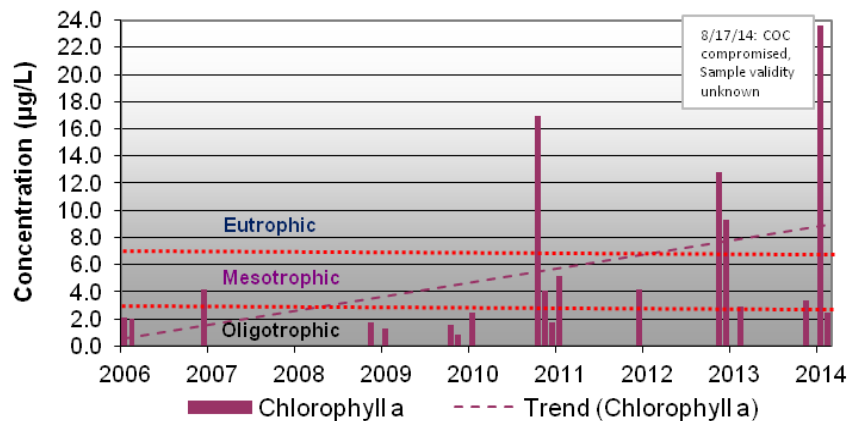
Sparse to moderate; floating lily pads; scattered clusters and along south and east shallows.

### Additional Comments:

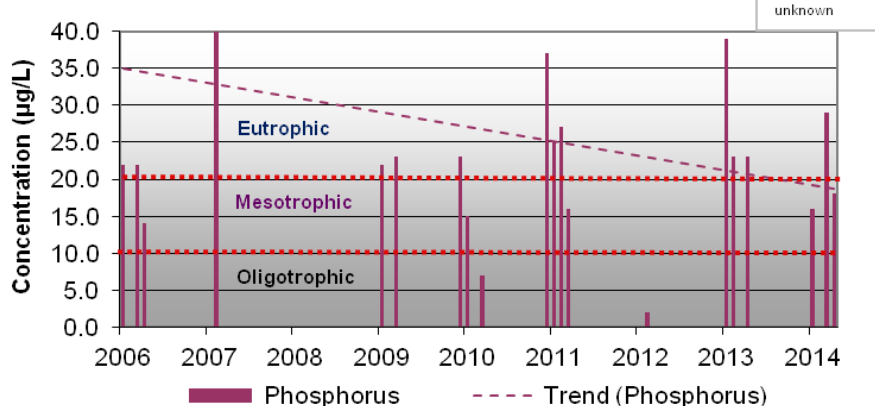
Water level depending on dam. Humans releasing large volumes of water in June. One resident dismantled structure and two rebuilt in August. State Troopers called.



Wolverine Lake • Chlorophyll a 2006-2014



Wolverine Lake • Phosphorus 2006-2014

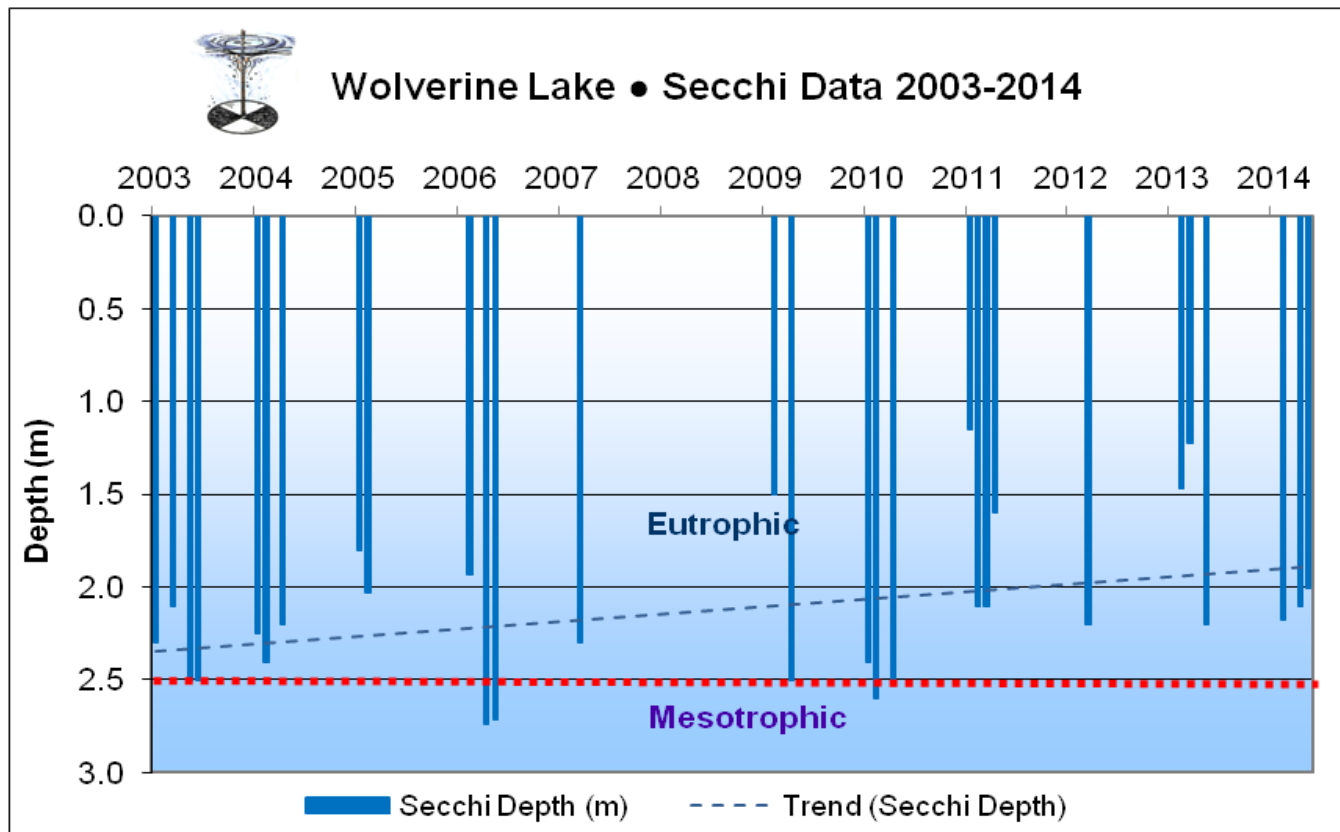


# Wolverine Lake Profile Measurements

Wolverine		Depth (m)	Temperature (oC)	Conductivity (mS/cm)	Dissolved Oxygen (mg/L)	pH (SU)	Secchi Depth mean (m)	
Date	9/28/2014	0.0	7.30	0.163	10.94	7.82	2.00	
Site Depth (m)	2.00	1.0	7.34	0.164	10.92	7.86		
Phosphorus (µg/L)	18.0	2.0	7.34	0.163	8.76	7.75		
Chlorophyll a (µg/L)	2.5							
Date	8/17/2014	0.0	15.61	0.148	8.20	7.66	2.10	
Site Depth (m)	2.10	1.0	15.59	0.149	8.25	7.66		
Phosphorus (µg/L)	29.0	2.0	15.56	0.150	7.00	7.61		
Chlorophyll a (µg/L)	23.6							
Date	6/26/2014	0.0	15.48	0.128	10.08	7.89	2.18	
Site Depth (m)	3.00	1.0	15.10	0.127	10.26	8.11		
Phosphorus (µg/L)	16.0	2.0	12.56	0.130	9.75	7.78		
Chlorophyll a (µg/L)	3.4							
ChIA	TP	Depth	T°	Cond	DO	pH	Secchi	Max
23.6	29.0	3.00	15.61	0.164	10.94	8.11	2.18	Max
2.5	16.0		7.30	0.127	7.00	7.61	2.00	Min
3.4	18.0		15.10	0.149	9.75	7.78	2.10	Med
9.8	21.0		12.43	0.147	9.35	7.79	2.09	Ave
11.9	7.0		3.94	0.015	1.37	0.15	0.09	StDev

Highlighted data does not meet Alaska Water Quality Standards (WQS)

The Alaska Water Quality Standards do not apply absolutely to lakes without taking multiple factors into account. For more information on WQS, please see <http://www.dec.state.ak.us/water/wqsar/wqs/>.



# Matanuska-Susitna Borough Volunteer Lake Monitoring Program

