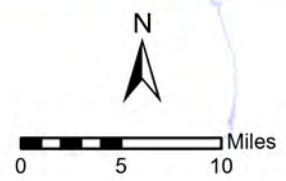
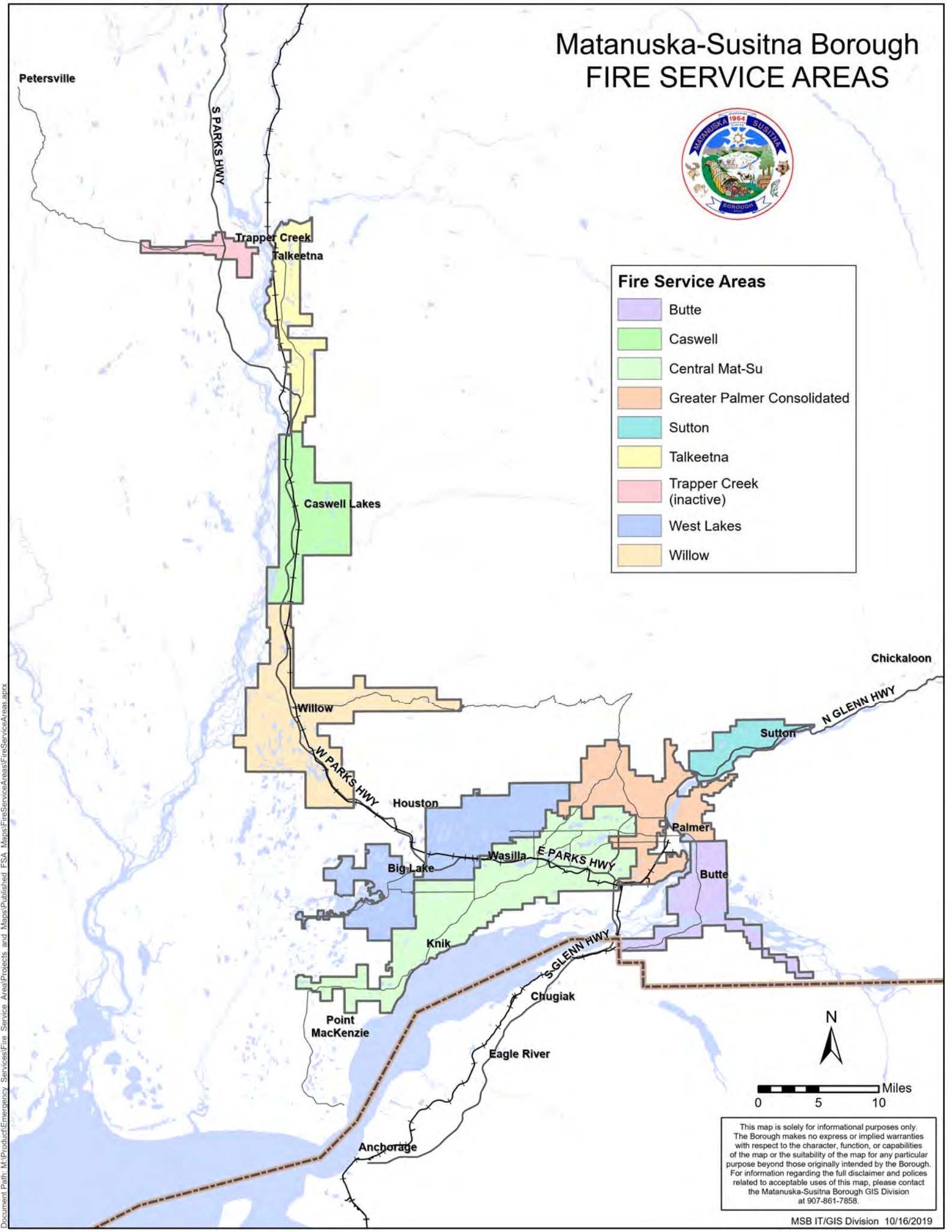


# Matanuska-Susitna Borough FIRE SERVICE AREAS



**Fire Service Areas**

- Butte
- Caswell
- Central Mat-Su
- Greater Palmer Consolidated
- Sutton
- Talkeetna
- Trapper Creek (inactive)
- West Lakes
- Willow



This map is solely for informational purposes only. The Borough makes no express or implied warranties with respect to the character, function, or capabilities of the map or the suitability of the map for any particular purpose beyond those originally intended by the Borough. For information regarding the full disclaimer and policies related to acceptable uses of this map, please contact the Matanuska-Susitna Borough GIS Division at 907-861-7858.

Document Path: M:\Product\Emergency\_Services\Fire\_Service\_Areas\Projects\_and\_Maps\Published\_FSA\_Map\FireServiceAreas\FireServiceAreas.aprx