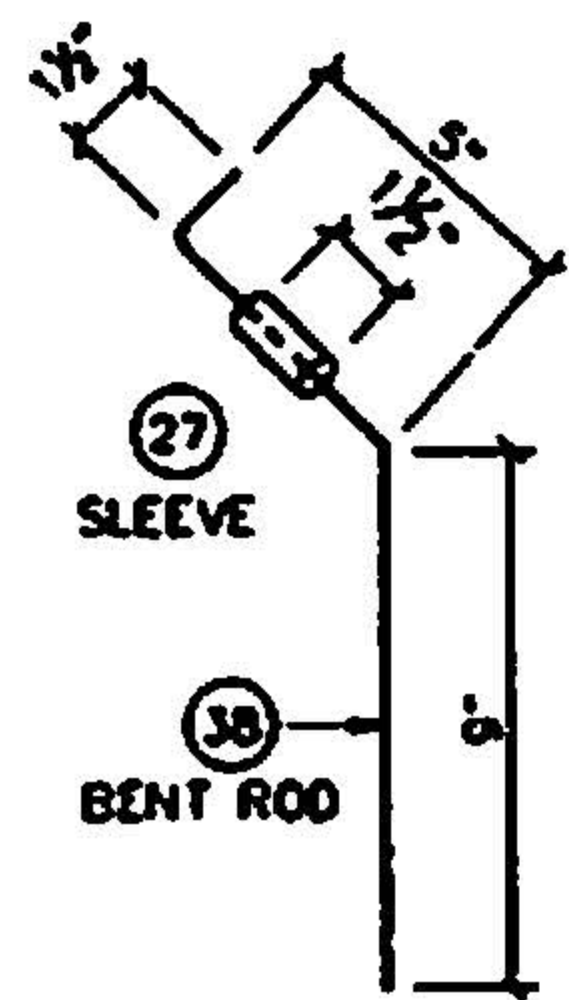


GENERAL NOTES

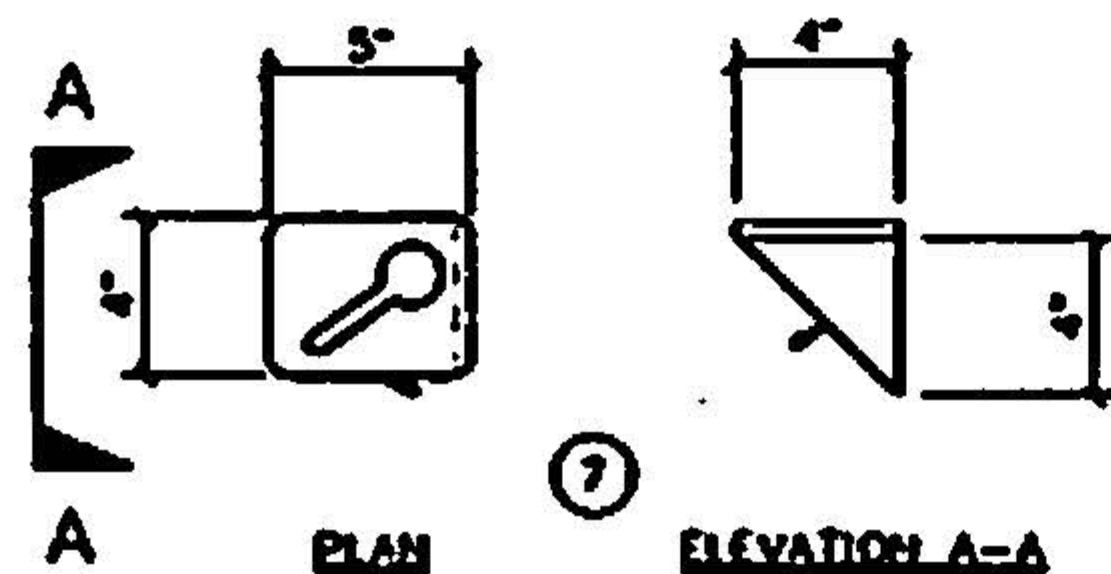
1. ALL PIPE MATERIAL SHALL BE SCHEDULE 40 UNLESS OTHERWISE NOTED.
2. ALL STEEL SHALL BE ASTM A36 STEEL UNLESS OTHERWISE NOTED.
3. WELD SIZE SHALL BE AS FOLLOWS UNLESS OTHERWISE NOTED.
 1/8" FOR SHEETS STEEL
 3/16" FOR .250" THICK BASE METAL
 1/4" FOR .350" THICK BASE METAL
 5/16" FOR .500" THICK BASE METAL
4. BOLTS SHALL BE ASTM A325 OR BETTER
5. BENT PLATES AND RODS SHALL HAVE A MINIMUM RADIUS OF 1.5 TIMES THE THICKNESS FOR UP TO 1/2" AND ABOVE.
6. ALL CORNERS ON OUTSTANDING PLATES AND BLOCKING SHALL BE COPED WITH A RADIUS
7. THE "AMERICAN INSTITUTE OF STEEL CONSTRUCTION" MANUAL SHALL GOVERN ALL STEEL FABRICATION AND WELDING TECHNIQUES AND WORKMANSHIP.
8. THE CONTAINER SHALL BE CLEANED AND PRIMED FOR PAINTING AS SPECIFIED, AFTER WELDING IS COMPLETE
9. ALL DOORS MUST BE ERECTED BEFORE HINGES CAN BE INSTALLED
10. ALL 12 GA. SHEETS SHALL BE LAPPED 1" FOR SPlicing AND WELDING
11. PAINT SHALL BE RUST-OLEUM 12A2 FOREST GREEN OR EQUAL.
12. VERIFY FIT-UP OF MATERIAL AND DIMENSIONS PRIOR TO FABRICATION.
13. WELD ALL 10 AND 12 GAUGE MATERIAL TO STEEL MEMBERS SIMILAR TO ITEM 20 ON DETAIL 3, SHEET A1
14. ALL MATERIALS IN MATERIAL LIST SHALL BE STEEL.
15. MATERIAL LIST IS NOT COMPLETE AND VENDOR IS REQUIRED TO VERIFY MATERIALS AND DETERMINE PROCEDURES NECESSARY TO PERFORM THE WORK.
16. WELDING SHALL BE PERFORMED IN ACCORDANCE WITH AWS D1.1.

LIST OF MATERIALS

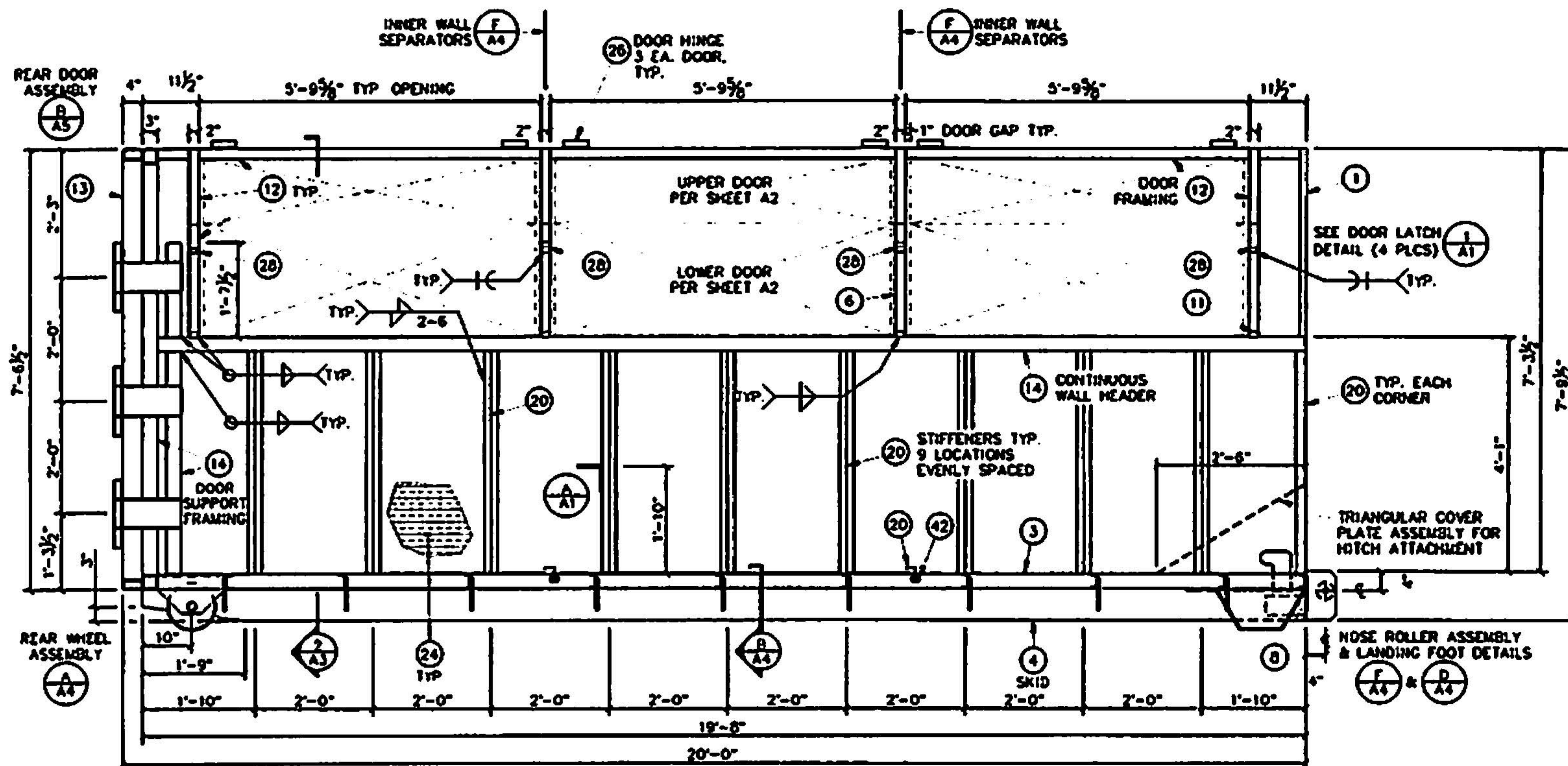
ITEM	TYPE	COMMENT
1	C3 X 41	
2	C3 X 5	
3	C4 X 5.4	
4	C6 X 8.2	
5	PL 3/16"	
6	PL 1/4"	
7	PL 3/8"	
8	PL 1/2"	
9	PL 5/8"	
10	TUBE 1" X 1" X 1/8"	
11	TUBE 1-1/2" X 1" X 1/8"	
12	TUBE 2" X 2" X 3/16"	
13	TUBE 2" X 4" X 3/16"	
14	TUBE 3" X 3" X 3/16"	
15	TUBE 1-1/2" X 1-1/2" X 3/16"	
16	L 1-1/4" X 1-1/4" X 3/16"	
17	L 1-1/2" X 2" X 3/16"	
18	L 1-1/2" X 1-1/2" X 3/16"	
19	L 2-1/2" X 2-1/2" X 3/8"	
20	L 2" X 2" X 3/16"	
21	L 7" X 4" X 1/2"	
22	EXP METAL 1/2"	
23	SHEET 10 GA	SPOT WELD SCREEN EVERY 3" O.C.
24	SHEET 12 GA	
25	SHEET 16 GA	
26	PIPE 1/2" DIA	
27	PIPE 3/4" DIA SCH 40	REMOVE WELD FROM INSIDE PIPE
28	PIPE 3/4" DIA SCH 80	
29	PIPE 1" DIA	
30	PIPE 1-1/2" DIA	
31	PIPE 2" DIA	
32	PIPE 3-1/2" DIA SCH 80	
33	PIPE 10" DIA	
34	ROD 1/2" DIA	
35	ROD 9/16" DIA	
36	ROD 5/8" DIA	
37	ROD 11/16" DIA COLD ROLL	
38	ROD 3/4" DIA	
39	ROD 1" DIA SOLID ROUND STOCK	
40	CHAIN 3/16"	
41	CHAIN 3/8"	
42	WASHER 5/8" ID	



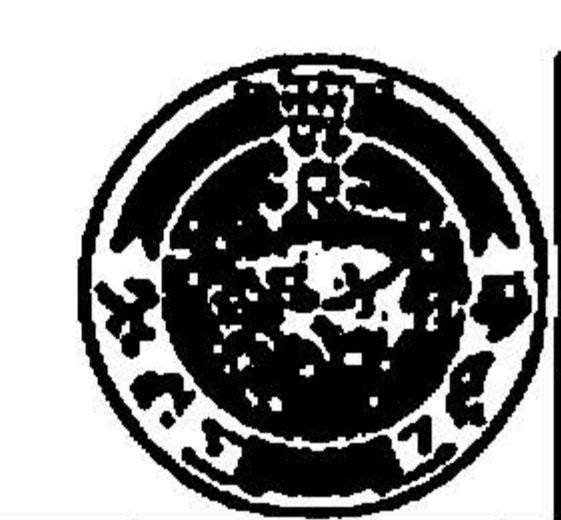
1 DOOR LATCH DETAIL
SCALE: NTS



A REAR DOOR CHAIN KEYWAY
SCALE: NTS



2 RIGHT SIDE ELEVATION
SCALE: NTS



MATANUSKA-SUSITNA BOROUGH
PUBLIC WORKS DEPARTMENT
SOLID WASTE DIVISION

SOLID WASTE - TRANSFER SITE
40 YARD - ROLL OFF CONTAINER
RECYCLE BIN

DATE
APR 2015
SCALE
N/A
FIGURE
A1 of A6

Attachment #2