

PARKS, RECREATION AND TRAILS FY2020-2025 CIP NOMINATIONS

CIP #	YEAR OF NOMINATION
1-189	2012 or earlier
190-244	2013
245-275	2014
276-298	2015
299-310	2016
311-337	2018

DRAFT

FY 2020-2025 CIP

Project Priorities:**1. Parks Highway - Talkeetna Spur Road Pedestrian Improvements****(CIP # 76)***State STIP Project*

The project encompasses pedestrian safety improvements in the general vicinity of the Parks Highway/Talkeetna Spur Road intersection. Specific improvements include: (1) a lighted Parks Highway underpass from Helena Avenue to the north side of the Susitna Valley Middle/High School driveway; (2) a pathway on the east side of the Parks Highway from the underpass north to the Talkeetna Spur Road; and (3) painted crosswalks across the Talkeetna Spur Road connecting the improvements to the existing bike trail. The Susitna Valley Middle/High School is directly across from the senior center and in the vicinity of numerous businesses. A safe route to and from the school is needed to protect all the students as well as facilitate traffic along the Parks Highway, a major state transportation route.

Funding Needed: \$3.2 Million**2. Bogard-49th Trail Extension****(CIP # 303)***Gateway Community Council*

The current pedestrian trail along the newly opened Bogard Road East ends at the Colony Schools parking lot. This project will extend the trail west along Bogard to meet the New Trunk Road pedestrian trail and south along 49th Street to connect with the Palmer-Wasilla Highway pedestrian trail. This will complete the loop which ties the Bogard and the Palmer-Wasilla Highway together and feeds the Colony School system. School children walking or biking along Bogard or 49th State Street without the protection of a trail or sidewalk will have a safe route to school. The general population will benefit from having more trails connected throughout the Borough.

Funding Needed: \$1 Million**3. Vine Road Separated Trail****(CIP # 247)***Meadow Lakes Community Council*

This project will design and construct a roadside trail on Vine Road from the Parks Highway. The traffic patterns and heavy utilization of the transportation corridor makes this project a priority. The enhancements will provide for safer, more functional roadside travel.

Funding Needed: TBD**4. Bogard Road - Trunk Road to Seldon/Bogard Intersection****(CIP # 65)***MSB Community Development*

Design and construct paved pedestrian/bike path on Bogard from Trunk Road to Seldon/Bogard intersection. Acreage or right-of-way is required along the three mile route.

Funding Needed: \$3 Million

5. Church Road Highway Separated Trail

(CIP # 67)

MSB Community Development/Meadow Lakes Community Council

A separated trail for Church Road will keep foot traffic, 4-wheelers, horses, bikes and other modes of transportation off the shoulder of Church Road. A trail system increases the value of properties within a half-mile of the trail. Also, keeping non-vehicle traffic off Church Road will improve public safety. This is needed to improve traffic safety and congestion on Church Road.

Funding Needed: \$9 Million

6. Pittman Road Highway Separated Trail

(CIP # 78)

MSB Community Development/Meadow Lakes Community Council

Design and construct roadside trail on Pittman from Parks Highway to Church Road (9 miles). The traffic patterns and heavy utilization make this project a priority. This trail is part of the Pittman Road/Church Road/Parks Highway Master Circle Trail system.

Funding Needed: \$4.5 Million

7. Schrock Road Highway Separated Trail

(CIP #80)

Meadow Lakes Community Council

The project will design and construct a trail from the intersection of Schrock and Church to the Olson Bridge on the Little Susitna River. By providing a safe trail to the river, tourists will have a wonderful destination. The need for more Bed and Breakfasts and other tourist facilities will be increased. This trail connects to the Pittman Road, Church Road and Parks Highway Master Circle trail system.

Funding Needed: TBD

8. Meadow Lakes Community Center to Parks Highway Separated Trail

(CIP # 245)

Meadow Lakes Community Council

This project constructs a trail from the future community center along W. Stacy Street, North Suzanna Street and Vienna Woods Access Road to the Parks Highway separated trail. This will connect the future community center to the Master Circle of Parks Highway, Pittman Road and Church Road trails which will provide access to other trails in the area such as the Lucille Creek trail.

Funding Needed: TBD

9. Long Lake Road Highway Separated Trail

(CIP # 71)

MSB Community Development/Willow Area Community Organization

Design and construct a 1.75 mile paved pedestrian/bike path beside Long Lake Road from the Parks Highway west to the intersection with Frank Road. Long Lake is a 45 mph arterial roads that carries heavy vehicular traffic between residential areas and local businesses and public facilities. The current practice of sharing the road between vehicles, pedestrians and bikers creates a severe safety hazard.

Funding Needed: \$1.75 Million

DRAFT

FY 2020-2025 CIP

Page 2 of 11

Tuesday, September 11, 2018

10. East Seldon Road Highway Separated Trail

(CIP # 81)

MSB Community Development

Design and construction of paved pedestrian/bike path on Seldon from Bogard Road to Lucille Street (4 Miles).

Funding Needed: \$4 Million

Parks, Recreation and Trails

Highway Separated Trails

Needs List (No Priority Order, Listed Alphabetically):

Meadow Lakes Community Center to Pittman Road Separated Trail

(CIP # 246)

Meadow Lakes Community Council

This project constructs a trail from the future community center along W. Karen Street, Kathi Drive, Barbi Drive and Kim Drive to the Pittman Road separated trail. This will connect the future community center to the Master Circle of Parks Highway, Pittman Road and Church Road trails which will provide access to other trails in the area such as Little Su Trail Bridge to Bench Lake.

Funding Needed: TBD

Old Glenn Pathway Extension to Knik River

(CIP #297)

Assembly Member Jim Sykes

This voter approved project will extend the shared use pathway along the west side of the Old Glenn Highway from Plumley Road to the Knik River. This 55 mile-per-hour section of the Old Glenn Highway has no shoulders, no separated pathway and negotiates a narrow road easement that includes a blind curve. It is a health and safety priority connecting with the separated bike path system on the Palmer/Wasilla Highway and the Old Glenn north of Plumley Road. Construction will include a 10-foot wide paved pathway, increased roadside clear zone and roadside ditches with increased capacity. Preliminary design is nearly finished. Several slivers of right-of-way need to be acquired and a few utility relocations need to be done to facilitate construction. (This project is partially complete)

Funding Needed: \$1.25 Million

Palmer Fishhook Highway Separated Trail

(CIP # 243)

MSB Assembly

Many recreational, commuting and touring bicyclists, rollerbladers, as well as participants in annual races use the narrow shoulder on Palmer Fishhook Road to access the new Government Peak Recreation Area trails, the Moose Range trails, local subdivisions and Hatcher Pass. A separated pathway from the Glenn Highway to the Little Susitna River Bridge will increase motor vehicle safety and the safety of pedestrians and others who utilize this important transportation route. The pathway will provide a seamless pedestrian route when it connects to the newly construction pathway on Trunk Road. This project could be phased with Phase I of the Glenn Highway to Trunk Road (approximately 2 miles), Phase II from Trunk Road to the Wasilla Fishhook intersection (approximately 4.5 miles), and Phase II from Wasilla Fishhook intersection to the Little Susitna River Bridge (approximately 1.5 miles).

Funding Needed: \$10 Million

West Seldon Highway Separated Trail

(CIP # 89)

MSB Community Development

Design and construct paved pedestrian/bike path on Seldon from Lucille Street to Wards Drive (1 Mile).

Funding Needed: \$1 Million

Project Priorities:**1. Government Peak Recreation Area Amphitheater****(CIP # 315)***MSB Community Development - Eric Phillips (Director)*

As part of the 2017 Government Peak Recreation Area - Southern Sub-Unit Development Plan, an amphitheater was recommended to enhance the opportunities near the Chalet. Currently there is one music festival that takes place at the Chalet and there has been interest in expanding the performing arts. The amphitheater can also be used to facilitate family events like weddings and for a stage to present awards during competitive events held at the facility. It also reduces the size of the sledding hill reducing the risk of sledders hitting the fending at the bottom of the hill.

Funding Needed: \$175,000**2. Big Lake Boat Bilge Water Disposal Site****(CIP # 90)***Big Lake Community Council*

This project will provide for the construction of disposal sites and treatment for boat bilge water coming from boats that haul-out at these facilities. Its purpose is to provide an alternative to boaters to the practice of pumping bilge water from their boats directly into the lake. This project will provide facilities in a treatment facility located in the campground near the boat ramp area. Once the boat has been loaded onto a trailer, the bilge water can be discharged in a designated area. Big Lake has been designated an impaired water body. This project will improve water quality and will be a positive step in getting Big Lake removed from the impaired water body designation.

Funding Needed: TBD**3. Point MacKenzie Multi-Use Recreation Area****(CIP # 3)***Pt. MacKenzie Community Council*

Design and eventual construction of multi-use regional recreational site on Borough owned land at Mile 9 on Pt. MacKenzie Road, west of Goose Bay State Game Refuge. Design should precede logging, sand and gravel mining and reclamation to ensure maximum benefit of borough resources. Parking lots, bathrooms, boat docks, campsites, shooting ranges are possible facilities.

Funding Needed: \$2.5 Million**4. Jordan Lake Community Park Enhancements****(CIP # 92)***Big Lake Community Council*

This project is to update the 2003 Jordan Lake Master Plan, beginning with a survey of the 3,000' southern property line in order to establish the park boundary.

Funding Needed: \$2,000

5. Wasilla Middle School Outdoor Rink Cover

(CIP # 108)

MSB Parks & Rec

This is a companion project to (CIP ID #109) which calls for the engineering and design of a metal building to cover the Wasilla Middle School Outdoor Ice Rink. During the past winter, the entire season scheduled for the rink had to be cancelled because of the unreliability of this outdoor venue. A new metal building will increase the amount of available ice time in the Valley. The need for project has been evident for many years to skating enthusiasts. See companion project, CIP ID #109, Wasilla Middle School Outdoor Ice Rink Cover – Engineering.

Companion Project CIP #109: This project provides for the engineering and design of a metal building to cover the outdoor rink located at the Wasilla Middle School. There is a need for more available ice time in the Valley, but the unreliability of this outdoor facility creates extensive weather cancellations. During the past winter, the entire season scheduled for the outdoor rink had to be cancelled. Many age groups utilize this facility, all of whom will benefit by the greater reliability provided by a covered facility. The project will also reduce long-term operation/maintenance costs to keep the rink functioning. This project has been discussed for many years.

Funding Needed: \$700,000

6. Meadow Lakes Off Leash Dog Park

(CIP # 96)

Meadow Lakes Community Council

The non-leash dog park will be located on a portion of the 120 acres of Borough property dedicated to public use.

Funding Needed: TBD

7. Alcantra Sports Complex – Concession and Restroom Building

(CIP #98)

MSB Community Development

Phase three of the development of the Alcantra Sports Complex includes the construction of a 40' x 40' concrete building. The conceptual plans show a two-story structure at the north end of the parking lot, with office space and equipment storage on the first floor, and public restrooms, a concession area, and meeting room on the second floor. The project will provide a permanent structure with adequate public restrooms to meet the demands of the facilities, including eight athletic fields. The project is supported by the Alcantra Sports Complex Master Plan.

Funding Needed: \$300,000

8. Big Lake Multi-Use Pathway Extension Across Fish Creek

(CIP # 66)

Big Lake Community Council

The project extends the multi-use pathway approximately 1,700 feet from Casey Drive, across Fish Creek and into the Big Lake South State Recreation Area. Six handicapped accessible parking spot will be constructed along the pathway near Fish Creek to provide access in compliance with ADA.

Funding Needed: TBD

9. Little Susitna Park at Olson Bridge

(CIP # 93)

Meadow Lakes Community Council

The Little Susitna River was designated as a State Recreation River. This project will create a five acre riverside community park with multi-use trail access connected to other trail systems. Constructing the facility near the Olson Bridge it may be possible to partner with the Knikatu Native Corporation which owns adjacent lands.

Funding Needed: TBD

10. Meadow Lakes Equestrian Park

(CIP # 95)

Meadow Lakes Community Council

The project proposes to construct a 30 acre equestrian park on a portion of the 120 acres owned by the Borough. The park would include an arena and trails which can also be used for cross country running and skiing.

Funding Needed: TBD

Parks, Recreation and Trails

Recreational Facilities

Needs List (No Priority Order, Listed Alphabetically):

Brett Memorial Ice Arena - Facility Upgrades

(CIP # 99)

MSB Community Development

Several items are needed to upgrade the services at the ice arena. Rubber flooring throughout the arena, locker rooms and bathrooms need to be replaced in the aging facility. These upgrades will contribute to making the arena a safer environment. To maximize the utilization of the building, a rink divider system should be purchased to make the arena more flexible and responsive to customer demands. Also included in this project is a programmable electronic sign for the facility. The arena is located in a high traffic area on the corner of Crusey Street and Bogard Road. The sign will be used to promote events at the arena and to promote other Borough activities.

Funding Needed: \$90,000

Meadow Lakes Swimming Pool

(CIP # 119)

Meadow Lakes Community Council

This project will construct a pool on a 40 acre parcel within the Borough's 120 acres in Meadow Lakes. The pool is envisioned next to a high school on the same acreage.

Funding Needed: TBD

South Big Lake Boat Launch Expansion

(CIP # 97)

MSB Community Development/Big Lake Community Council (FY2020-2025)

The existing boat launch on the 15-acre Borough property is in disrepair and causing damage to trailers. The sand base is eroding and the concrete has settled in some years and heaved in winter. Additionally, the existing parking lot is not adequate to support the number of vehicles which use the facility. FY2020-2025: The project is to expand the South Big Lake Borough Day Parking facility located at Mile 8.2 of the South Big Lake Road to increase parking availability and improve the dock. Expansion of this facility will increase the availability of parking while recreating at Big Lake both summer and winter. Improved handicapped accessible docking facilities are needed to launch boats and provide for emergency services access.

Funding Needed: \$250,000

Chase Trail Parking Lot Expansion

(CIP # 336)

Talkeetna Non-Resident Property Owners/Chris Emond (907) 441-6408; cjemond@gmail.com

Expand the current parking lot; remove the center island to double the available parking for remote non-resident property owners who access their properties with ATV's and snow machines; requiring parking for trucks and trailers. Location = Chase Trail Parking Lot (see attached map). Proposal for 36 car and 15 car lot expansion.

Funding Needed: \$50,000

CIP 336 FY2020-2025

R05W

15 Car Stalls

53 Car Stalls
18 Truck and Trailer Stalls

30' 2-way Traffic

26' 2-way Traffic

25' Setback

36 Car Stalls

Matanuska - Susitna Borough
Land and Resource
Management Division



Alaska Railroad Property

Parking Stall Dimensions:
Truck and Trailer = 50'x18'
Car = 20'x10'



0 20 40 80 120 160
Feet

Date: May, 2017
Sources: MSB GIS, MSB LRMD, AK DOT
Projection: NAD 83 AK ST PLN Z4
Location: MSB
Author: MSB LRMD

Priority Projects:**1. Government Peak Recreation Area ADA Trail Loop****(CIP # 337)***Alaska Trails - Roy Wahl (907-232-5816) iwahl@gci.net*

Improve an existing 0.8 mile trail loop at GPRA to comply with Americans with Disabilities Act requirements. There are no ADA compliant trails at GPRA. GPRA is an Alaskan Jewel that will be utilized by citizens of the MATSU, Alaska and visitors from all over the world. Our population is aging and more and more people have disabilities. This project will benefit them directly health wise. The Mat-Su Borough Parks, Recreation & Trails Advisory Board unanimously supported including ADA accessible trails in the GPRA Development Plan at their meeting November 20, 2017. The proposed ADA trail loop would be on the north side of the GPRA parking lot. (See Map)

Funding Needed: \$40,000**2. Austin Helmers Pioneer Ridge Trail****(CIP # 305)***South Knik Community Council*

Currently overflow traffic at the Austin Helmers Pioneer Ridge Trail Parking Lot parks along Knik River Road, which has a speed limit of 50MPH and no shoulders. The curves and hills west of the entrance located approximately at Mile 3.8, impair sight distance and increase the possibility of a traffic/pedestrian mishap. By enlarging the parking lot and installing signage alerting approaching traffic of entry to the parking lot will remove this safety hazard.

Funding Needed: \$50,000**3. Eska Falls Trail****(CIP # 69)***MSB Community Development*

Project includes construction of both motorized and non-motorized trails to the Knob Hill Area. The motorized portion of the project received partial funding last year from the Recreational Trails Program Grant. The non-motorized portion is complete. Locals and visitors, both motorized and non-motorized trail users will benefit from separate uses. A rerouted motorized trail will help mitigate adverse impacts to natural resources.

Funding Needed: \$50,000**4. Lucille Creek Multi-Use Trail****(CIP # 72)***Meadow Lakes Community Council*

This project connects the existing Lucille Creek trailhead at the Wasilla Sports Complex to Meadow Lakes' western boundary of Johnson Road and eventually onto the Big Lake Trail system. Currently the pioneer winter trail is narrow and winding and presents hazards for users who meet along the trail.

Funding Needed: TBD

5. Meadow Lakes Multi-Use Trails

(CIP # 74)

Meadow Lakes Community Council

The project will construct trails for use by equestrians, skiers and runners over 50 acres of the 120 acre Borough site adjacent to the 40 acres owned by the Meadow Lakes Community Council, Inc. The trails can be used in conjunction with school programs and by the general public for a wide variety of purposes. Meadow Lakes Multi-Use trails connect to the Pittman Road, Church Road and Parks Highway Master Circle trail system via the Meadow Lakes Community Center.

Funding Needed: TBD

6. Little Su Trail Bridge to Bench Lake

(CIP # 88)

Meadow Lakes Community Council

This project will construct a 10' by 40' long trail bridge across the Little Susitna River. Both approaches to the bridge has been grubbed and cleaned and the lower portion has been surveyed. The facility will connect state land to a recreational area at the end of the trail known as Bench Lake, a fishing destination.

Funding Needed: TBD

7. Bald Mountain Motorized Use Parking Area and Trailhead Development

(CIP #63)

Assembly Member Colver/Meadow Lakes Community Council

These funds will be used to enhance recreational opportunities for snow-machine use (motorized use) in the Hatcher Pass Management Area. These funds will be used to construct or improve parking and trailheads.

Funding Needed: \$1.25 Million

8. Crooked Lake Trailhead

(CIP # 68)

MSB Community Development

Construct trailhead during the upgrade of Papoose Twins Road at Crooked Lake Trail.

Funding Needed: \$300,000

9. Lucille Creek Trail Collector

(CIP # 73)

Meadow Lakes Community Council

This project will connect the Wasilla Sports Complex to the Big Lake area and further north. This proposed trail would connect to the Lucille Creek trail to the Pittman trail and the Parks Highway trail.

Funding Needed: TBD

10. Meadow Lakes Loop Multi Use Trail

(CIP # 75)

Meadow Lakes Community Council

The project will design and construct a multi-use trail along the entire length of Meadow Lakes Loop and Meadow Lakes Road from the intersection of the Parks Highway to the intersection of Pittman Road. This trail connects to the Pittman Road, Church Road and Parks Highway Master Circle trail system.

Funding Needed: TBD

Parks, Recreation and Trails

Recreational Trails

Needs List (No Priority Order, Listed Alphabetically):

Chickaloon Community Trail System

(CIP # 304)

Chickaloon Trail Club

This project will construct a 3-mile trail system for the residents of Chickaloon. The trails will be multi-use built to sustain foot traffic, mountain bikes, small ATVs and horses in the snow-free months; and snowmachines and skis in the snow months. The trails are intended to create a place where the residents of Chickaloon can recreate without trespassing on private land. The location, on 160-acres of Borough owned land (designated in the comprehensive plan for recreation and community use) is convenient to the center of the populated area of Chickaloon. The land has a variety of terrain, so trails can be located and designed to provide both challenging and less-challenging routes for users. When the trails are constructed, the trails will be maintained by volunteers of the Chickaloon Trail Club.

Funding Needed: TBD

Paved Non-Motorized Trail Kenlar Road to Hawk Lane

(CIP # 77)

Big Lake Community Council

Construction of a non-motorized paved "bike" trail to follow along side Kenlar Road to Hawk Lane and then to Beaver Lake Road. Our Houston Middle and High School students, the residents of Mid-Valley Senior Center, as well as the residents of Big Lake have no other option but to use the road when walking or biking in that area. The HMS and HHM track team has to run along this route as well for practice, which is very dangerous.

Funding Needed: TBD

Talkeenta Mail Trailhead Construction

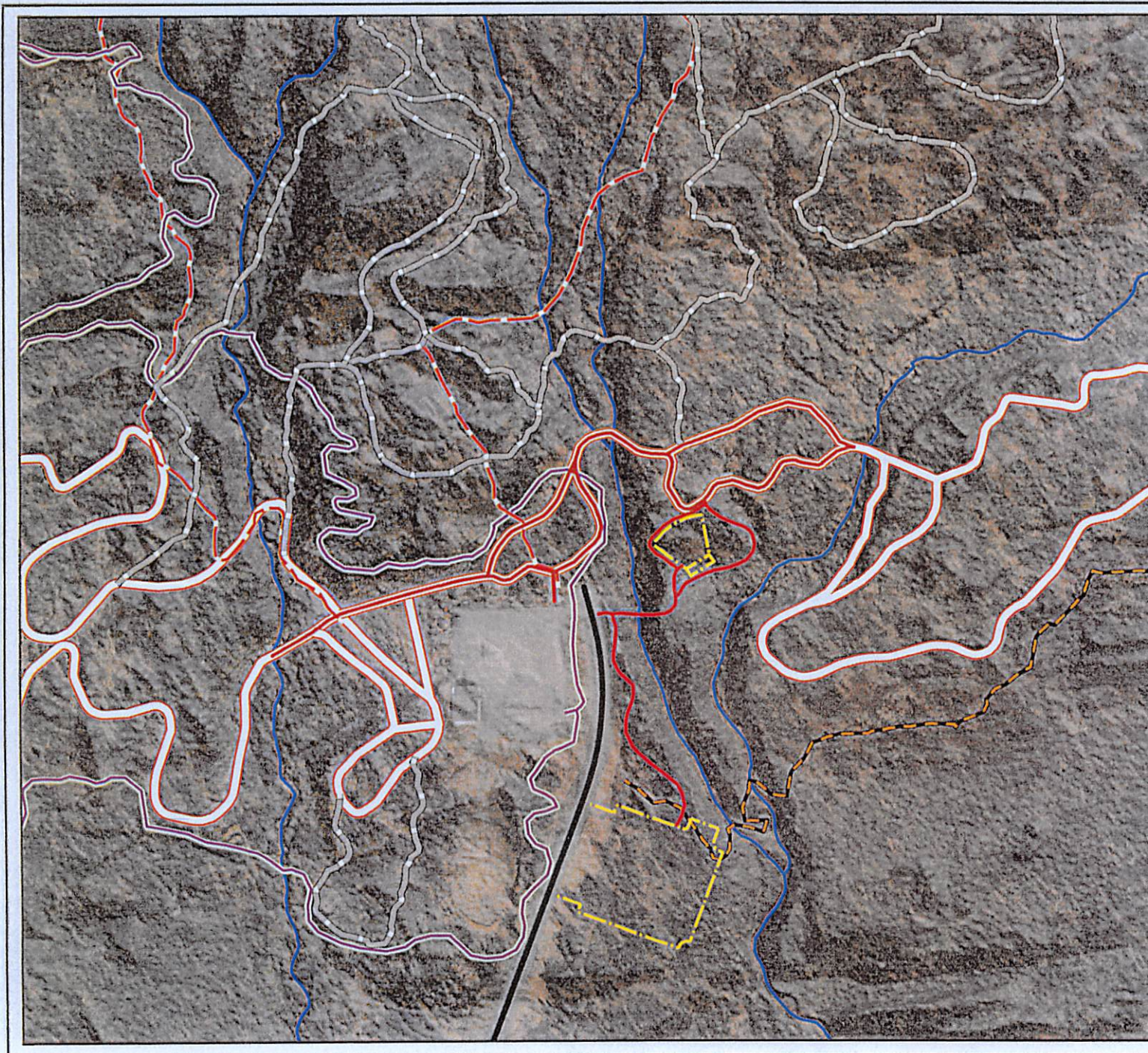
(CIP # 84)

MSB Community Development

Complete construction of trailhead on Hidden Hills Road for Talkeetna Mail Trail.

Funding Needed: \$300,000

CIP 337 FY 2020-2025



Matanuska-Susitna Borough
Community Development and
Capital Projects Departments



Government Peak Recreation Area Proposed ADA Trails

Legend

- Proposed ADA Trails (0.8 mi)
- Proposed Overflow Parking and Mini-Amphitheater
- Ski Trails Under Construction
- Ski Trails
- Mountain Bike Singletrack
- Hiking
- Primitive Equestrian



0 60 120
Meters

0 270 540
Feet

Date: November, 2017
Source: MRS GIS, MRS LANDS AC DOT, MDS
Prepared: 10/12/17 BY: MRS
Author: MRS LMD