

Crystal Lake 2014 Data Summary

Crystal Lake Snapshot

Years Monitored: 2
Total # of Events: 5
2014 Events: 4
Total Hours Monitored: 18

Observations

Wildlife Observed:

Arctic terns
Jumping fish
Loons
Small fry

Water Level:

Medium

Water Color:

Light green

Algae:

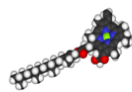
None to sparse

Aquatic Plants:

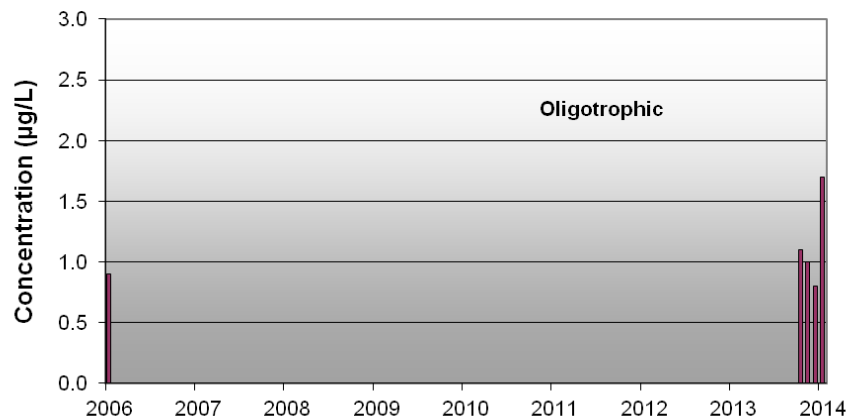
None to sparse; emergent grasses and floating water lilies; on shoreline.

Additional Comments:

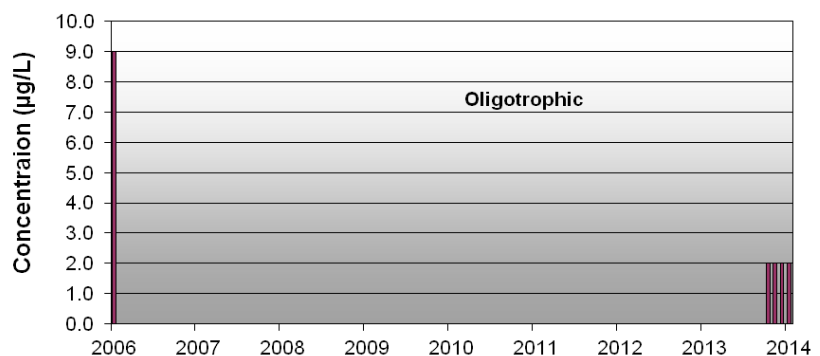
None



Crystal Lake • Chlorophyll a 2006, 2014



Crystal Lake • Phosphorus 2006, 2014



Crystal Lake Profile Measurements

Crystal Lake		Depth (m)	Temperature (°C)	Conductivity (mS/cm)	Dissolved Oxygen (mg/L)	pH (SU)	Secchi Depth mean (m)	
Date	8/8/2014	0.0	19.12	0.011	8.84	8.18	5.75	
		1.0	19.14	0.011	8.78	8.06		
Site Depth (m)	7.20	2.0	19.12	0.011	8.71	7.98		
		3.0	19.10	0.011	8.69	7.93		
Phosphorus (µg/L)	2.0	4.0	19.08	0.011	8.60	7.89		
		5.0	19.04	0.011	8.52	7.79		
Chlorophyll a (µg/L)	1.7	6.0	18.02	0.012	7.22	7.55		
		7.0	14.72	0.015	1.43	7.03		
Date	7/23/2014	0.0	19.88	0.010	9.02	6.92	4.87	
		1.0	19.90	0.010	9.06	6.85		
Site Depth (m)	7.30	2.0	19.90	0.010	8.96	6.82		
		3.0	19.74	0.010	8.86	6.74		
Phosphorus (µg/L)	2.0	4.0	19.68	0.010	8.90	6.70		
		5.0	19.12	0.010	8.87	6.61		
Chlorophyll a (µg/L)	0.8	6.0	16.04	0.011	7.57	6.33		
		7.0	13.18	0.013	1.96	5.96		
Date	6/28/2014	0.0	17.46	0.011	9.67	7.70	5.69	
		1.0	16.47	0.011	9.64	7.38		
Site Depth (m)	7.40	2.0	16.03	0.011	9.67	7.12		
		3.0	15.92	0.011	9.63	7.06		
Phosphorus (µg/L)	2.0	4.0	15.84	0.010	9.59	7.01		
		5.0	15.69	0.011	9.48	6.88		
Chlorophyll a (µg/L)	1.0	6.0	15.34	0.011	9.44	6.88		
		7.0	10.71	0.012	5.69	6.29		
Date	5/26/2014	0.0	14.47	0.011	10.75	8.46	4.75	
		1.0	14.38	0.011	10.80	8.19		
Site Depth (m)	7.45	2.0	14.36	0.011	10.87	8.12		
		3.0	13.56	0.010	10.76	7.89		
Phosphorus (µg/L)	2.0	4.0	11.82	0.010	11.14	7.70		
		5.0	10.03	0.011	11.16	7.51		
Chlorophyll a (µg/L)	1.1	6.0	7.96	0.011	10.63	7.20		
		7.0	7.28	0.010	9.22	7.02		
ChIA	TP	Depth	T°	Cond	DO	pH	Secchi	
1.7	2.0	7.45	19.90	0.015	11.16	8.46	5.75	Max
0.8	2.0		7.28	0.010	1.43	5.96	4.75	Min
1.1	2.0		16.04	0.011	9.04	7.16	5.28	Med
1.2	2.0		16.00	0.011	8.82	7.30	5.26	Ave
0.4	0.0		3.56	0.001	2.20	0.64	0.53	StDev

Highlighted data does not meet Alaska Water Quality Standards (WQS)

The Alaska Water Quality Standards do not apply absolutely to lakes without taking multiple factors into account. For more information on WQS, please see <http://www.dec.state.ak.us/water/wqsar/wqs/>.



Small fry

Matanuska-Susitna Borough Volunteer Lake Monitoring Program

